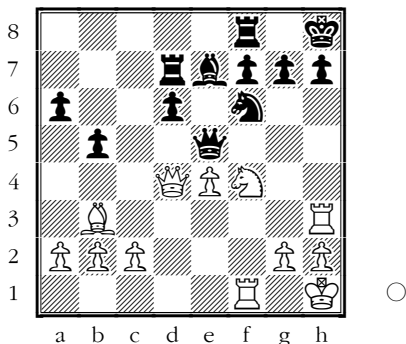
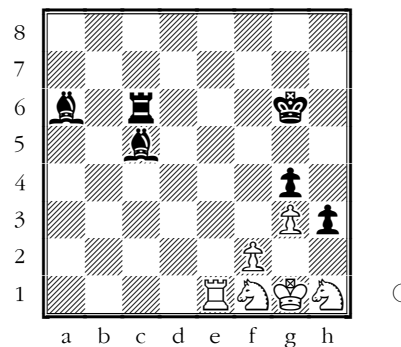


Test Yourself!

Wade – Boxall, 1953



56.♞c1 ♔a5 57.♞a1 ♔b4 58.♞b1
 ♔c5 59.♞h1 ♚g7 60.♞c1 ♔b6
 61.♞a1 ♔c5 62.♞c1 ♞c6 63.♞d1 g5
 64.♞hg3 ♚g6 65.♞e1 h4 66.♞h1
 g4 67.hxg4 fxg4 68.g3 h3 (D)



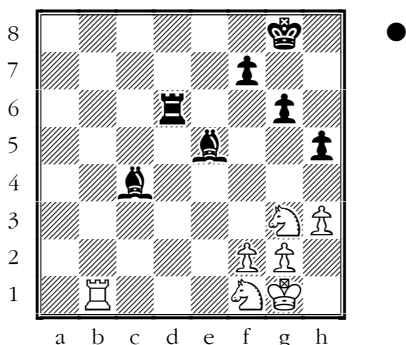
World Chess News

Baku Open

Elo-favourites continue to dominate in this tournament.

One curious endgame from round 1 drew my attention:

Orujov (2077) – **Aleksandrov** (2642)
 Baku Open (1), 23.08.2010



Even though material is equal and all pawns are on the same flank, Black can and should play this position for a win – here bishops are stronger than knights and the presence of rooks makes the bishops even more powerful. Black's plan is to advance his pawns, pushing the enemy knights. 51...f5 52.♞c1 ♔a6 53.♞e1 ♔c3 54.♞c1 ♔b2 55.♞b1 ♔c3

The h1-knight isn't a happy piece!
 69.♞e4 ♚f5 70.♞f4+ ♚g5 71.♞e3 ♔e2 72.♞f5+ ♚g6 73.♞f4 0-1.

[Official website](#)

Dun Laoghaire Chess Festival

This festival includes two invitational tournaments with 10 players in each. One event offers GM norm chances and the other one is an IM-event. This is the first time in history (!) that a closed GM-tournament is held in Ireland.

Standings in the GM-event:

1. IM Manca – 3/4
- 2-5. GMs Bischoff and Hebden, IMs Quinn and Heidenfeld – 2½
6. GM Baburin – 2, etc.

Standings in the IM-event:

- 1-2. IMs Ansell and Rodriguez Lopez – 3½/4, etc.

[Official website](#)





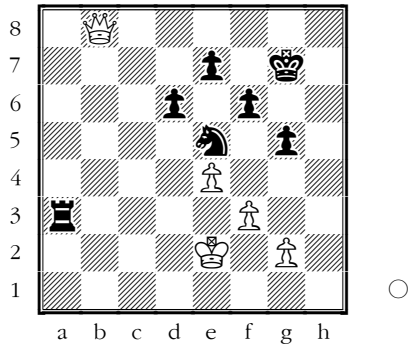
Beware: Blunder!

by GM Alex Baburin

Today I'd like to show two curious examples from the ongoing tournaments in Dublin.

Bischoff (2553) – Quinn (2377)

Dun Laoghaire GM (4), 24.08.2010

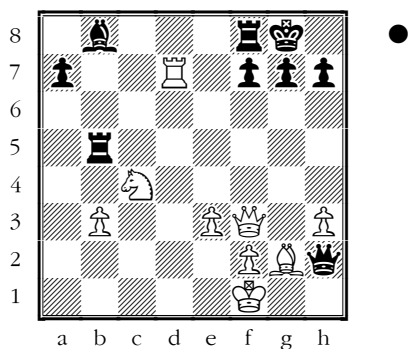


This game should end in a draw, but being tired after a long game the German GM made a blunder: **65. ♖b2?? ♜e3+!! 0-1.**

White resigned as he was losing his queen in all lines: 66. ♜xe3 ♘c4+ or 66. ♜d1 ♜e1+ or 66. ♜f1 ♜e1+.

Fitzsimons (2263) – Griffiths (2249)

Dun Laoghaire IM (2), 22.08.2010



Being an exchange up, Black is clearly winning. He could play something like 29...g6 and see what White's next move will be. As right now White has no threats, it won't be easy for him to find a good move. But Black lost the sense of danger and played **29... ♜xb3??**

The punishment was swift: **30. ♖xf7+!! ♜xf7 31. ♜d8+ ♜f8 32. ♕d5+ ♜h8 33. ♜xf8# 1-0.**

Annotated Game

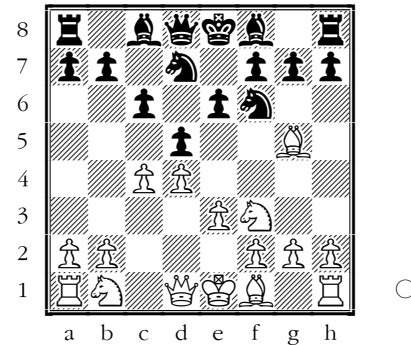
by GM Alex Baburin

Hebden (2556) – Baburin (2549)

Dun Laoghaire GM (2), 22.08.2010

Queen's Gambit Declined – [D30]

1.d4 d5 2.c4 e6 3. ♘f3 ♘f6 4. ♕g5 ♘bd7 5.e3 c6 (D)

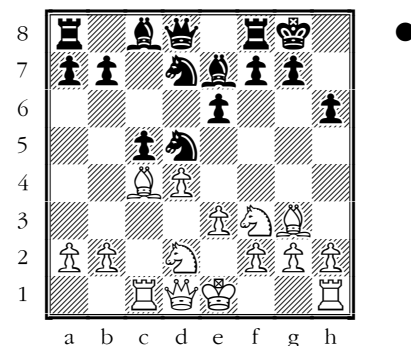


Here White can play 6. ♘c3, when Black can go for the Cambridge Springs Variation with 6... ♖a5. White can radically avoid that by playing 6.cxd5, but Mark Hebden likes to avoid that system in a different manner:

6. ♘bd2 ♕e7 7. ♜c1 h6 8. ♕f4 c5

This move is probably not as accurate as 8...0-0 9. ♕d3 c5 10.0-0 b6 11.cxd5 ♘xd5 12. ♕g3 ♕b7 13.a3 cxd4 14. ♘xd4 ♜c8 15. ♖e2 ♜xc1 16. ♜xc1= Hebden-Baburin, 4NCL, Sunningdale 2010. Was I looking for an improvement on move 8, when I played 8...c5? Not really – I simply forgot our previous game! ☺

9.cxd5 ♘xd5 10. ♕g3 0-0 11. ♕c4 (D)



White has a small advantage here. Black's main problem is the c8-bishop, which needs to be developed. **11...cxd4 12. ♘xd4**

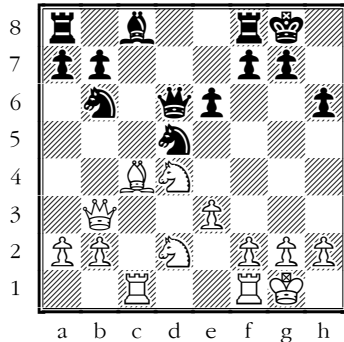
White could not leave me with an isolated pawn as 12.♙xd5?! runs into 12...dxe3!.

12...♞7b6 Usually this is a great place for a knight, but playing the Alekhine Defence I am well used to a knight there! :-) In this case I wanted to gain a bit of time by attacking the c4-bishop, but White can leave him there.

13.0-0 ♙d6 14.♙xd6

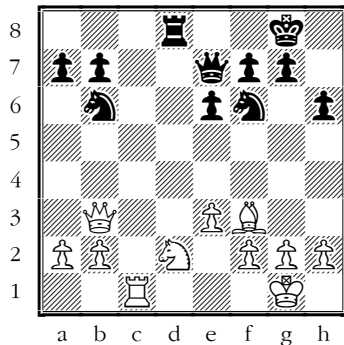
After the game Mark suggested 14.♙xd5 ♞xd5 15.♙xd6 ♚xd6 16.♚b3±.

14...♚xd6 15.♚b3 (D)



15...♞f6! I felt that after this move Black solved most problems – now the knight on d2 does not have too many prospects.

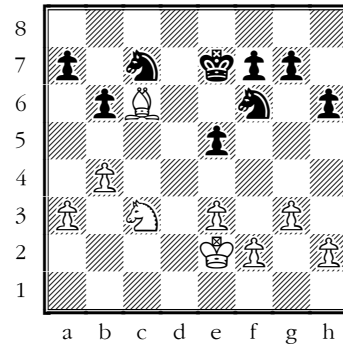
16.♞fd1 ♙d7 17.♞b5 ♙xb5 18.♙xb5 ♚e7 19.♙e2! ♞ac8 20.♙f3 ♞xc1 21.♞xc1 ♞d8 (D)



Here I offered a draw, but Mark felt that he had an edge.

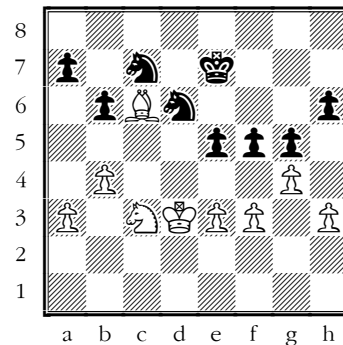
22.♞b1 This is too fancy. Simple 22.♞e4 ♞xe4 23.♙xe4 was a better try, though I guess I would have found the line 23...♞d5 24.♞d1 ♞f6! 25.♞xd8+ ♚xd8 26.♙xb7 ♚d2, where Black should be OK.

22...♞bd5 23.g3 b6 24.a3 e5 25.♞d1 ♞c7 26.♞c3 ♞xd1+ 27.♚xd1 ♚d7 28.♚xd7 ♞xd7 29.♙c6 ♞f6 30.♚f1 ♚f8 31.♚e2 ♚e7 32.b4 (D)



I felt that there was no danger here and that led me to make an error:

32...g5?! Generally, grabbing space (or rather marking territory) isn't a bad thing, but here Black weakens the f5-square, which could play a role later. **33.f3 ♚d6 34.♙b7 ♞fe8 35.♚d3 ♚e7 36.g4 ♞d6 37.♙c6 f5 38.h3? (D)**

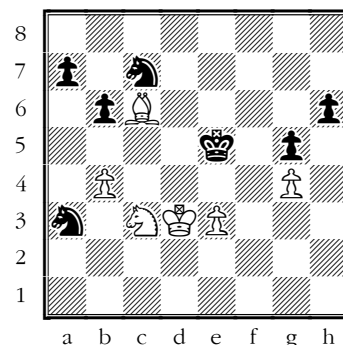


It was Hebden's turn to get overconfident and make a mistake. He would be pressing if his bishop was on a safe square (i.e. a4), but now Black can take the initiative:

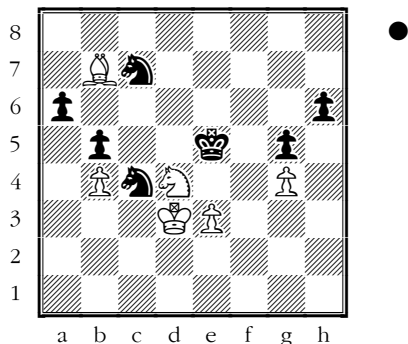
38...e4+! 39.♚e2 The line 39.fxe4 fxg4 40.hxg4 ♞f7 41.♚d4 ♚d6 42.♙d5 ♞e5 leaves White in trouble.

39...exf3+ 40.♙xf3 fxg4 41.hxg4 ♞c4 42.♚d3 Hebden sacrifices a pawn to avoid the line 42.a4 ♞e5.

42...♞xa3 43.♙c6 ♚d6 44.♙a4 ♚e5 45.♙c6 (D)



45...b5! 46.♖e2 a6 47.♗d4 ♖c4
48.♗b7 (D)

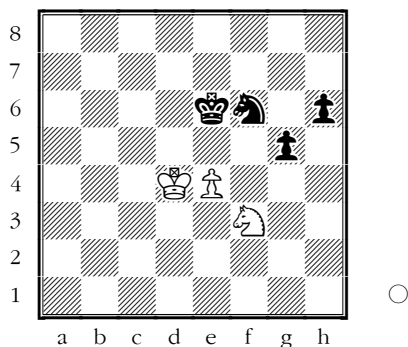


48...♗d5 Mark was critical of this move, believing that Black should have kept both knights on. I too knew that my move was committal, but I felt that the resulting knight endgame could be won. However, it seems that 48...♖f6! was a better try. I just did not see that retreat, which would vacate a nice square for my c4-knight.

49.♗f3+ ♖d6 50.♗xd5 ♖xd5
51.e4+ ♖e6

At first, I calculated the line 51...♖d6 52.♖d4 a5 53.bxa5 ♗xa5 54.e5+ ♖e6 55.♖c5 ♗c4 56.♖xb5?? ♗xe5 57.♗h2 ♖d5, but, of course, White can improve on that line: 53.e5+! ♖e6 54.♖e4 axb4 55.♗d4+ ♖f7 56.♗b3.

52.♖d4 a5 53.bxa5 ♗xa5 54.♖c5 ♗c4 55.♖xb5 ♗e3 56.♖c5 ♗xg4 57.♖d4 ♗f6 (D)

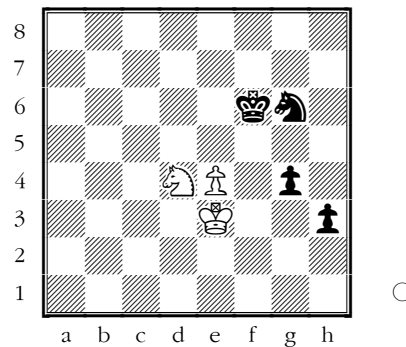


This is how far I saw when I was considering 48...♗d5. I felt that Black should be winning here. At that point Hebden had 9 minutes for the remaining moves, while I had 12. I have no idea where all that time went later...

58.♖e3

58.e5!? ♗h5.

58...♗d7 59.♖d4 g4! 60.♗d2 ♗e5
61.♖e3 ♖f6 62.♖f4 h5 63.♗b3
♗g6+ 64.♖e3 h4 65.♗d4 h3 (D)



Black has made a lot of progress and should be winning now.

66.♗f5 ♖g5 67.♖f2 ♖f4 68.♗g3
♗e5

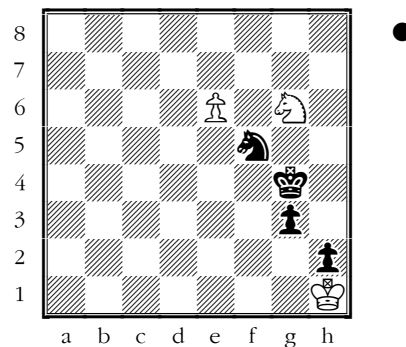
It was better to play 68...♗h4! as then White can't go for 69.♗e2+ ♖xe4 70.♖g3 in view of 70...♗f5+ 71.♖xg4 h2.

69.♗e2+! ♖g5

69...♖xe4? 70.♖g3 leads Black nowhere.

70.♖g3 ♗f3 71.e5 ♗h4 72.e6 ♗f5+
73.♖f2 ♖h4 74.♖g1 g3 75.♗f4
♖g4 76.♗g6 h2+ 77.♖h1 (D)

Or 77.♖g2 ♗e3+ 78.♖h1 ♗d1-+.



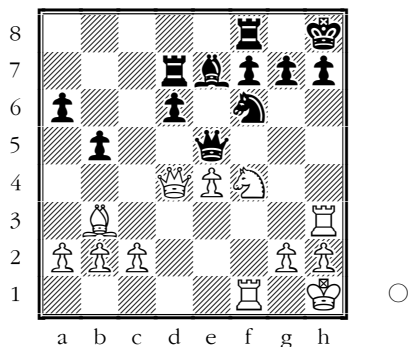
Here I had just over a minute left, while Mark had about the same. I could (and should!) have stopped here and calculate a bit, but it's hard to know when to stop and take time, particularly when you don't have much of it left. And you can add to that the fact that we had been playing for almost 5 hours then... Here 77...♗e7!-+ would be a very nice finish!

77...♖f3? 78.♗e5+ ♖f4 79.♗g6+
79.e7! ♗xe7 80.♗f3!-.

79...♖f3 [79...♖g4] 80.♗e5+ ♖f2
81.♗g4+ ♖f3 82.♗xh2+ gxh2
83.♖xh2 ♖f4 1/2-1/2.

Solution to our Quiz:

Wade - Boxall, 1953



1. **Qxf7! 1-0.**

Contact information. Have some comments about Chess Today? [E-mail us](#) - we appreciate your feedback! **Chess Today** is published by Alexander Baburin, 3 Eagle Hill, Blackrock, Co. Dublin, Ireland. Tel: (353-1) 278-2276. Fax: (353-1) 283-6839. E-mail: ababurin@iol.ie Website: <http://www.chesstoday.net> Editors: GMs Baburin, Scherbakov and Golubev, IMs Barskij and Notkin. Technical editors: Graham Brown, Ivan Baburin and Ralph Marconi.

Chess Today is copyright 2000-2010 by Alexander Baburin and protected intellectual property under the International Copyright convention. Subscribers are allowed to non-commercially distribute copies of Chess Today at their chess club, chess tournaments and via e-mail (on an occasional basis). Any other use and distribution (reproduction, via print, electronic format, or in any form whatsoever), as well as posting on the Web, is strictly prohibited without express written permission.